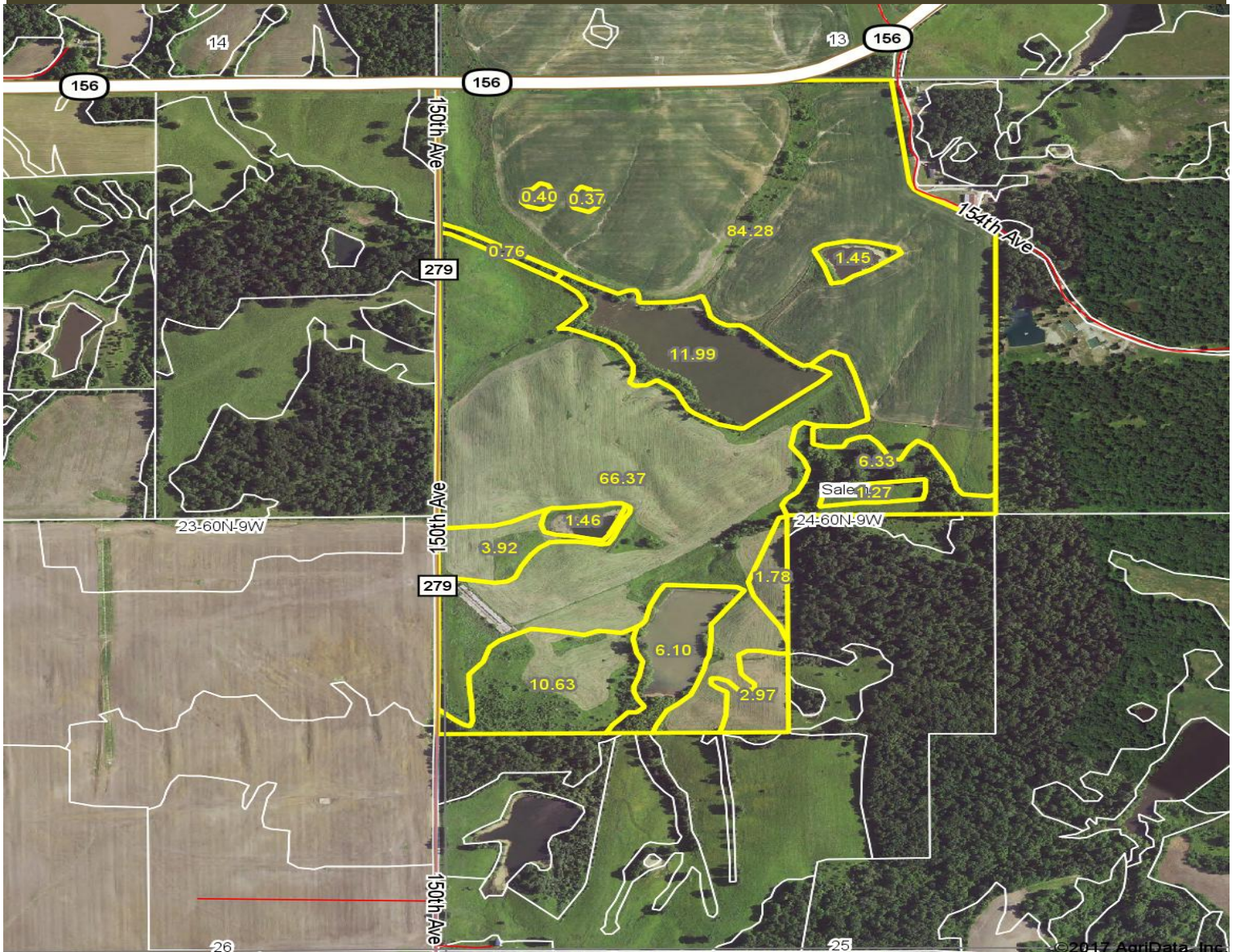


202 acres; Hwy. 156; Lewis County

202 acres for sale in Lewis County. Approximately 126 acres tillable. Balance is pasture and scattered patches of woods and brush. 10-12 acre lake and 6+/- acre pond/lake on site. Blacktop and county road frontage just outside of Ewing.

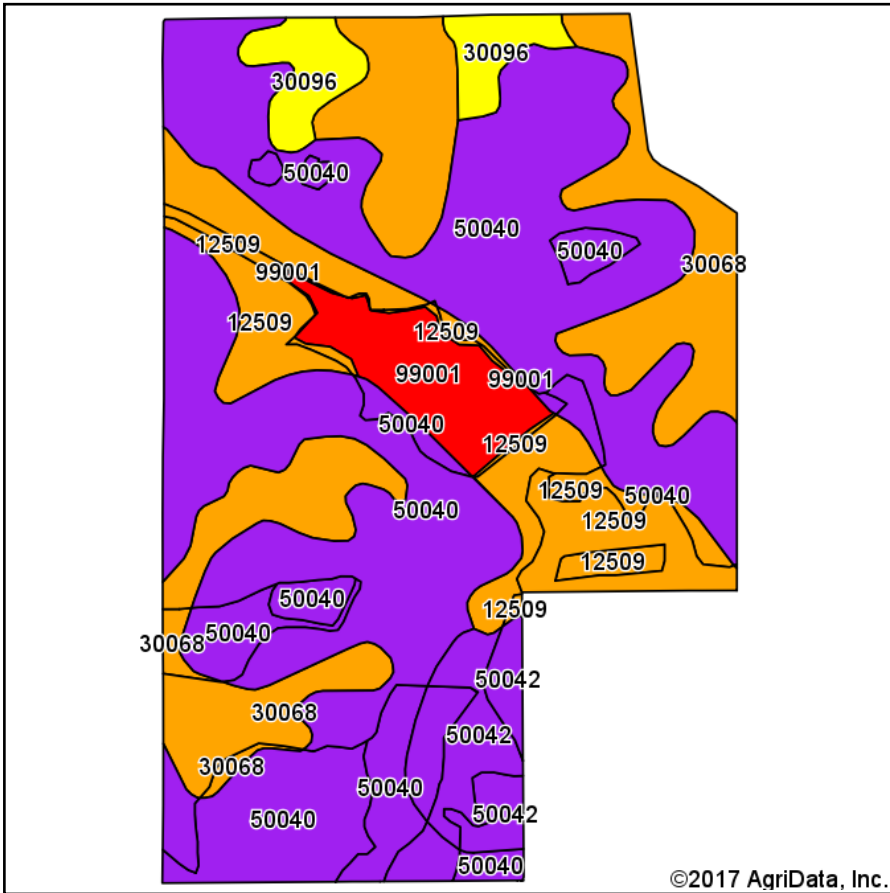
\$2,950/acre (\$595,000)



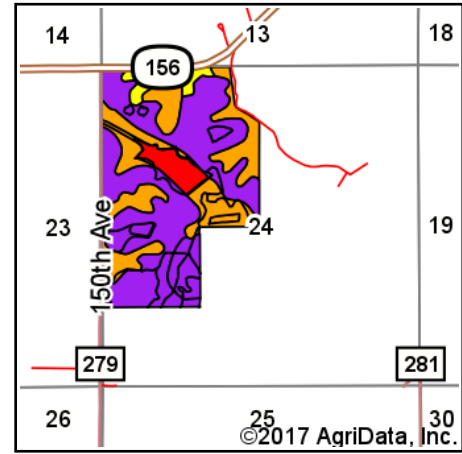
**RACKS &
TRACTS**

Bob Nichols
Cell: (314) 713-0689
Office: (636) 528-9500
bob@racksandtracts.com

**SPECIALIZING IN AGRICULTURAL
& HUNTING PROPERTIES**



Soils data provided by USDA and NRCS.



State: **Missouri**
 County: **Lewis**
 Location: **24-60N-9W**
 Township: **Salem**
 Acres: **200.08**

Maps Provided By:

 CUSTOMIZED ONLINE MAPPING
 © AgriData, Inc. 2017 www.AgriDataInc.com



Area Symbol: MO111, Soil Area Version: 17

Code	Soil Description	Acres	Percent of field	Non-Irr Class Legend	Non-Irr Class *c	Common bermudagrass	Caucasian bluestem	Warm season grasses	Alfalfa hay	Orchardgrass red clover	Tall fescue
50040	Lindley loam, 14 to 20 percent slopes, eroded	106.18	53.1%		Vle						
30068	Gorin silt loam, 5 to 9 percent slopes, eroded	39.89	19.9%		IIle	6	7	7	4		7
12509	Moniteau silt loam, 2 to 5 percent slopes, occasionally flooded	25.75	12.9%		IIIw	8		10			7
50042	Lindley loam, 20 to 35 percent slopes, eroded	10.40	5.2%		Vle						
99001	Water	9.91	5.0%		VIII						
30096	Keswick clay loam, 9 to 14 percent slopes, eroded	7.95	4.0%		IVe	7	8	8	5		8
Weighted Average						2.5	1.7	3	1	2.6	2.5

*c: Using Capabilities Class Dominant Condition Aggregation Method

Soils data provided by USDA and NRCS.

RACKS & TRACTS

SPECIALIZING IN AGRICULTURAL
& HUNTING PROPERTIES

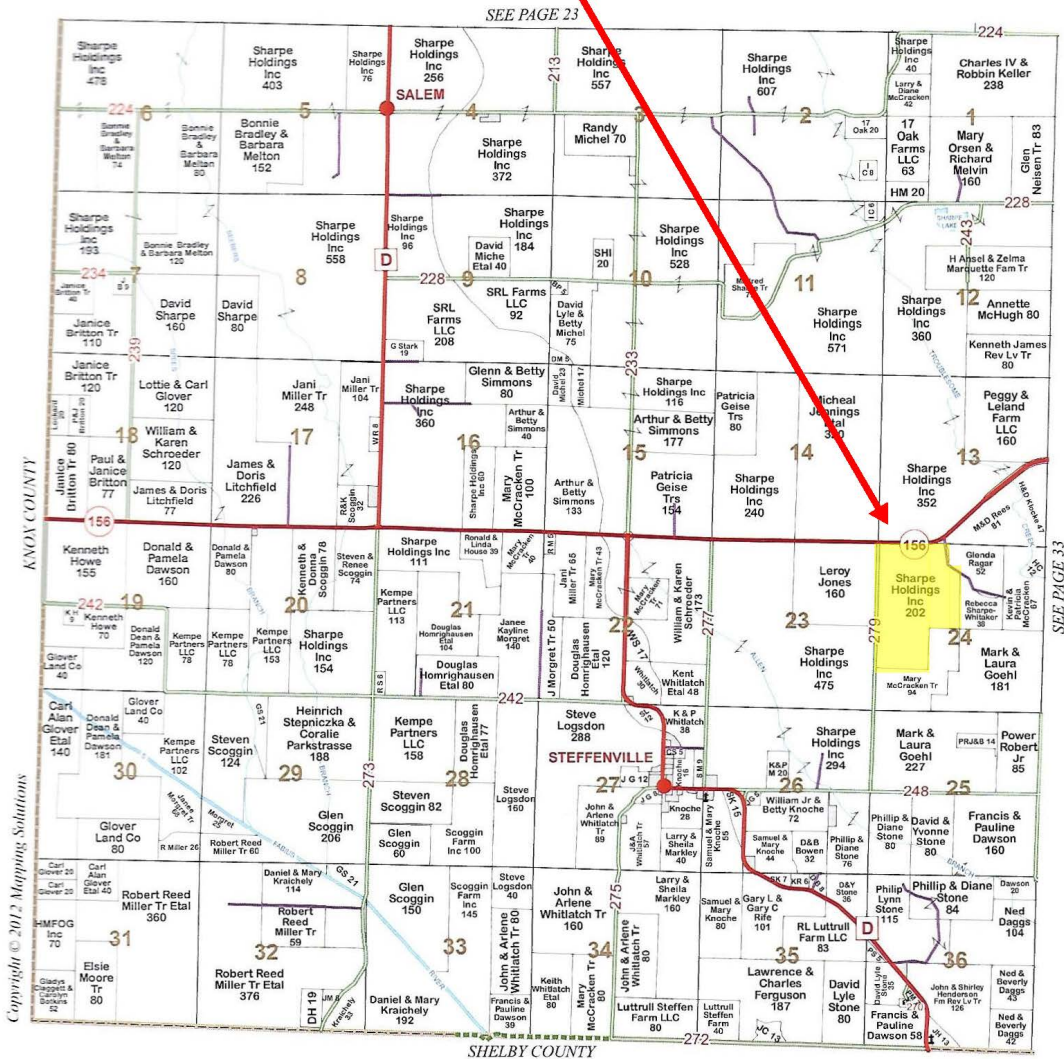
Bob Nichols

Cell: (314) 713-0689

Office: (636) 528-9500

bob@racksandtracts.com

TOWNSHIP 60N • RANGE 9W



Driving Directions:

From Ewing (at MO-6 and Mo-156 W), take MO-156 West 7.3 miles to farm on left.